

VACANT  
3,170 USF

GRAND  
AVENUE  
MALL

ELEV.

ELEV.

STAIR

STAIR

MATTHEW'S BUILDING - 3RD FLOOR



SCALE: 1/16" = 1'-0"

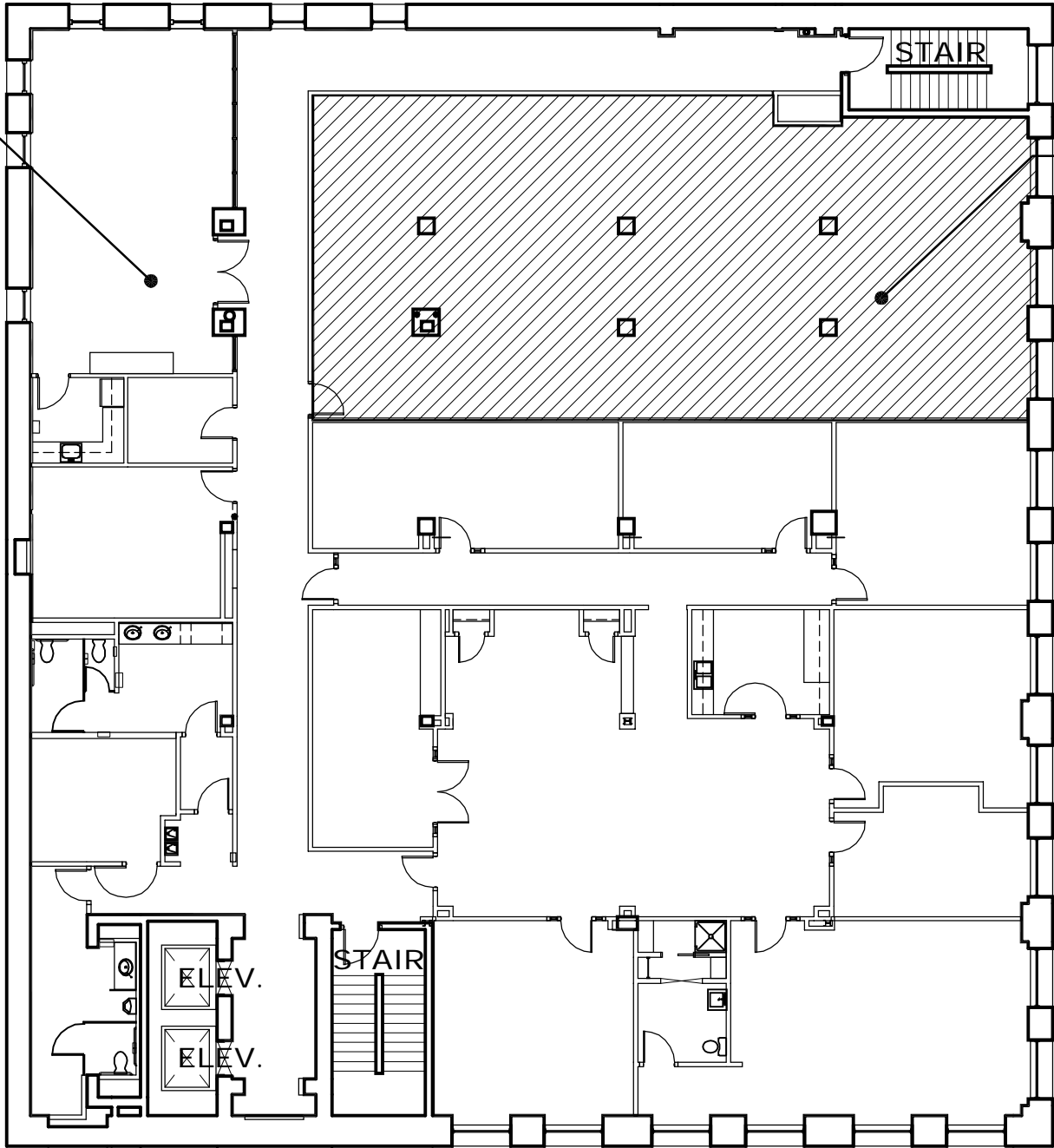


EPPSTEIN UHEN  
ARCHITECTS

MAY 21, 2004 MARKETING

BLDG CONF.  
ROOM

VACANT  
2,100 USF



MATTHEW'S BUILDING - 4TH FLOOR



SCALE: 1/16" = 1'-0"



EPPSTEIN UHEN  
ARCHITECTS

MAY 21, 2004

MARKETING